

和

‘WA’
harmony

HIGASHI HONGWANJI HAWAII BETSUIN BULLETIN

4
April 2019

HIGASHI HONGWANJI MISSION OF HAWAII

At Higashi Hongwanji, we remain true to our origins as an open Sangha, welcoming anyone who wishes to learn more about the Jodo Shinshu tradition of Buddhism.

A registered 501(c)3 organization

Rinban: Kenjun Kawawata
Minister: Steven Toyoshima
Minister: Hidesato Kita

President: Kenneth Saiki
Vice President: Raymond Uyema
Secretary: Marian Tsuji
Treasurer: Karen Wong

1685 Alaneo Street
Honolulu, HI 96817
Tel: (808) 531-9088
Fax: (808) 531-3265
Email: betsuin@hhbt-hi.org

Wa is published monthly by Higashi Hongwanji Mission of Hawaii for its members and friends. Comments, articles and other items for publication consideration are welcomed.

Editor: Ken Saiki

BUDDHA DAY 2019

Rinban Kenjun Kawawata

We are celebrating Buddha's birth in the month of April. Through Buddha Day, Hanamatsuri, we think about the importance and how precious each individual life is.

It is said that when Buddha was born, he walked seven steps and said, "Above the heavens and below the heavens, I am the only noble one." This statement means I received a precious life. I think that Buddha was saying that while representing all human beings and all life, each life has the same quality as Buddha's life and each one of our lives is precious and unique.

In The Larger Sutra, Buddha said, "Immersed in lust and craving, human beings in this world are born alone and die alone. Depart alone and arrive alone. From here, their actions lead towards a destination that is a place of neither pain nor pleasure—each individual must experience this by himself, no one else can take his place."

Buddha said that we are born alone and die alone, your karma leads your life, pain or pleasure. Nobody takes your place. No one else can have your life. You cannot exchange your life for another.

Each individual life is unique. You are the only one who can live your life. You might think that you have a family, so you are not living alone. But each individual has to experience his or her own life.

Each individual has different favorite foods. When families have dinner they may share and eat the same food but each one has a different taste.

Someone may complain that it is too salty or too sweet. Someone may like spinach and someone else does not.

So even though we live together, we have different experiences and feelings in our daily lives. Our individual life is different, unique and precious. We are responsible for our own lives. No one else can take responsibility for your life. We cannot depend on anyone or anything. We just rely on our own selves and the dharma.

Do you remember the story, "The King and his Four Wives"?

Once upon a time there was a king who had four wives. The king was about to die, and in his last moments he called each of his wives to his bedside one by one.

To the first wife he said, "You have been my most loyal and devoted wife and I have loved you the most. I am about to die but I am afraid and don't want to die alone. Please, will you go with me?"

(cont'd on p. 2)



Rinban Ken Kawawata

In Celebration of Buddha's Birth

Hawaii Buddhist Council Buddha Day Service

Sunday, April 7 at 9:30 am

Honpa Hongwanji Mission of Hawaii • 1727 Pali Hwy., Honolulu

Betsuin Hanamatsuri Service

Sunday, April 14 at 10:00 am

Higashi Hongwanji Mission of Hawaii • 1685 Alaneo St., Honolulu

The first wife answered, "You have been a most wonderful king and husband, showered me with diamonds, gold and other riches, but I am sorry, I cannot go with you."

Then the king called second wife and asked her, "You have always been my most obedient wife. I am about to die, and I don't want to die alone. Please, won't you go with me?"

The second wife answered, "You have been a most generous and giving king and husband, and provided me with a huge palace to live in with the the finest furnishings, but I am sorry, I cannot go with you."

He called his beautiful, talented and accomplished third wife, of whom he was extremely proud and showed off to neighboring kingdoms. But when she was asked to accompany him in death, she refused in the same way as his first and second wife and walked away.

His fourth wife was very caring and supportive of the king, and was always there in time of need, through good times and bad, to comfort him. When the king asked her to go with him to the afterlife, she also said, "You were a great king and husband, but I cannot go with you. You can count on me to arrange for a grand funeral and we will all attend the services, but I cannot go with you."

"Hanamatsuri is...

an expression of our joy of living and joy in being able to encounter the teachings of the Buddha."

In this parable, the first wife represents our fortune. No matter how much wealth we have amassed, we cannot take it with us when we die.

The second wife, is like our comfortable home we must leave behind when we die, no matter how large, comfortable and beautiful it may be.

The third wife symbolizes fame and social status. Even if you're a sports celebrity, a popular entertainer or the President of the United States, in death your life ends just like everyone else. We are all human beings.

The fourth wife is like our family. No matter how much we love them or they love us, we cannot take our families along with us. When we die we must die alone.

We received precious life and we will die sometime in the future. Then what is the meaning of birth and life? How can we find the meaning of our life? What can we really depend on for a meaningful life?

The celebration of Hanamatsuri is not only the celebration of the birth of one person who lived in history. Hanamatsuri is an expression of our joy of living and joy in being able to encounter the teachings of the Buddha.

In gassho,
Rinban Kenjun Kawawata

花祭り

河和田賢淳

この4月8日は釈尊がお生まれになった日です。釈尊のお誕生は花祭りと呼ばれお祝いされてきました。釈尊がお生まれになった時、空からは甘露の雨が降り、花々が咲き開き、そして大地が震動した、また釈尊は生まれてすぐに七歩歩かれ、「天上天下我独尊、この世界で私は本当に尊い存在だ」云われました。この世界に生まれ出るといことは希中の稀なことなのです。私どもは父母を縁として誕生しました。この縁を頂くことは想像もつかないほど希なことです。だからこの世に生を頂く事は大変尊いことなのです。お釈迦様はそのことを「我一人尊し」と言われたのです。そしていただいたと尊いのちをむなしく送りたくない、それが迷いと苦の世界、六道輪廻の世界を超えて、さとりの世界に歩む7歩目の歩みを表しているのです。

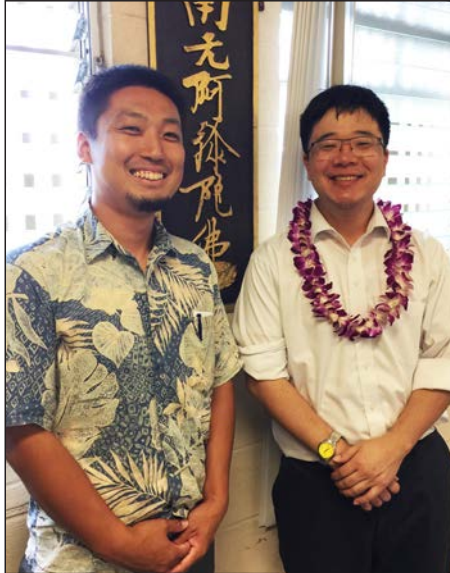
私ども人間は生まれてすぐ動物のように歩けませんし、また話す事もできません。偉大な方の御誕生をこのような話をもって讃えてきたのです。

赤ちゃんが生まれた時、大声を出して泣き叫びます、その大声は、今この世に大事な尊いのちをいただいたという叫びであり、また大地が震えるとはその感動でありましょう。私ども本当に感動した時私ども全身が震え、全世界が揺れ動くのです。

この誕生の感動は私どもの願いのあらわれです。実は私のいのちは生まれです前より生まれたいと願っていたと仏教では考えるのです。だから生まれた時、大きな声で泣きその感動をあらわすのです。そして誕生後も私どもはこの願いに後押しされながら生きるのです。いのちを無駄にせず生きたい、いのちを満足させたい。このような願いをもち、またこのような願いをかけられ生きているのです。それが六道輪廻を超える歩み、苦を乗り越えて生きる歩み、すなわち本当の事を知ってゆこうとする歩みとなり、真実の世界へ歩み7歩目の歩みとなるのです。私どもはこのような願いによって生かされているのです。この願いを本願と申します。真実に目覚めて生きよと願いがかけられているのです。それがお念仏、南無阿弥陀仏となってあらわれているのです。ですから生まれた瞬間の「おぎゃー」という感動の表現は、本願に遇ったというお念仏の叫びと同じことでもあります。

この感動を忘れずに生きたいことでもあります。今年も皆様とともにお釈迦様のお誕生をお祝いし、私どもの「誕生の意味を、そして生きる喜び」について聞いてきたいと思います。

合掌
河和田記



From opposite sides of the Pacific, Rev. Koen Kikuchi (left) and Rev. Steve Toyoshima share common experiences as Jodo Shinshu ministers.

New resident minister arrives at Higashi Hongwanji Mission

Our Betsuin welcomes Rev. Steven Toyoshima, a California yonsei, as its new resident minister as of April 1.

Meanwhile, Rev. Koen Kikuchi, who has been at the Betsuin since 2015, moves to Kaneohe Higashi Hongwanji as its resident minister to replace Rev. Hideaki Nishihori, who returned to Japan in February.

Kikuchi-sensei will be surely and sorely missed at the Betsuin, along with his wife, Mai, and children, Ren, Kokoro and Hana, who brightened up the temple by their presence at the temple over the past 3½ years.

Rev. Toyoshima, however, brings his own unique style and youthful personality with him and we eagerly look ahead to getting to know him better and growing with him.

Having just arrived on March 28 from LA on the late evening Hawaiian Air flight, he is still trying acclimate himself to our weather conditions, though he found the cooling tradewind breezes easy to like.

We will publish a profile on Rev. Toyoshima in an upcoming issue of Wa. Meanwhile, please feel free to drop by to introduce yourself and welcome him to our ohana.

New Higashi Hongwanji board elects new officers for 2019-2020

As you may know, at the annual general membership meeting held Feb. 24, a new of board of directors was elected to help guide our century-old Betsuin into its next phase of sharing Jodo Shinshu teachings with the island community.

On March 3, the board held a special meeting to elect new officers to help provide the leadership and guidance to take the temple into the next generation and beyond. They are:

- President - Ken Saiki
- Vice President - Ray Uyema
- Secretary - Marian Tsuji
- Treasurer - Karen Wong

We thank all our officers and members who have served in the past for their efforts to get us to this point in the temple's long history.

We look forward to continuing to work with all of you while we remember our humble roots and welcoming sangha. At the same time, we will strive to expand and improve our various initiatives to become the acknowledged leader in our Jodo Shinshu tradition in Hawaii.

With your cooperation and help, we are confident we can achieve our goals. Please feel free to share your opinions and ideas with our board.

April film *The Departure*: "Like a haiku...a work of art...stunning"

This profound movie is not to be confused with another great 2009 film with a similar name, *Departures* (*Okuribito*), which we showed during a movie night six years ago. This 2017 documentary is about a man whose role as a father appears to be his own spiritual awakening. Ittetsu Nemoto is a former punk rocker-turned-Buddhist-priest at a temple in Gifu, Japan. His daily life is consumed with needs and demands of people on the brink of suicide while he is struggling himself with his own health, being a husband, a father, demands for his own self-care and the challenges of enforcing boundaries with people who are in

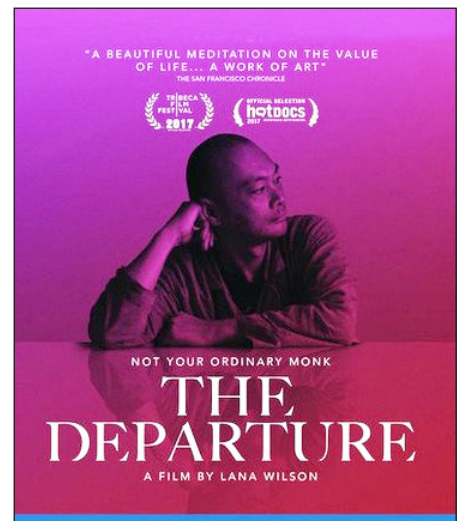
trauma. It's a beautifully crafted film. At face value it would seem like a provocative topic—suicide—but it's refreshing in that it lacks the sensationalism of suicide in Japan. It's a tender and raw portrait of an individual captured in warm light and with comfort food.

Awards include Best Documentary, Moscow Film Festival (2017); nominee, Independent Spirit Awards (2018).

Showtime: 6:30 pm, Tues., April 23, 87 min. Directed by Lana Wilson. Color, Japanese audio, English subtitles. Free admission. Light refreshments, or bring to share!

ザ・ディパーチャー

元パンクロッカーの臨濟宗住職、根本一徹さんは、現在は岐阜県関市の大禅寺を拠点に、自殺防止の相談を受け、日々深刻な問題を抱える自殺願望者たちに全身全霊で語りかけている。アメリカ人であるラナ・ウィルソン監督が、臨濟宗の住職、根本さんを知った経緯は「ニュー Yorker 誌で根本一徹さんについて書かれた記事を読んだ。読んですぐに、彼の行っていることに興味を持って、もっと彼のことが知りたいと思ったわ。特に、彼に助けを求めてきた人たちに対して、



彼はどのような言葉をかけたのかが気になり、その場に居たいとも思ったのよ。そこで、大禅寺のことを知り、死に対して真剣に向き合う機会を観客に提供できるのではないかと思ったのが製作のきっかけだったわ」と明かした。

公開：2017年、カラー、言語：日本語、字幕：英語、映時間：87分、4月23日(火)午後6:30時、入場無料。

HAWAII DISTRICT
2019 Joint Gathering
March 9, 2019

Rev. Patti Nakai was persuaded to make a trip from her Chicago home temple to be keynote speaker



Rev. Patti Nakai

for our Hawaii District Joint Gathering on March 9. She spoke about "Coming into Community: What Shinran Learned from Honen," as a continuation of our Jodo

Shinshu denomination's "Let Us Discover the Joy of Living" theme.

She first provided some insight as to why a young prince, who was to become Sakyamuni Buddha, would leave a palace where one could ostensibly live a luxurious, joyful life. He realized, however, that he was in fact surrounded by sickness, death, old age and war, which leads to depression, anger and hostility.

Rev. Nakai pointed out that besides having the Buddha and the dharma, one must have the sangha to be a Buddhist, to show and share the joy of living with others.

Both Honen and Shinran taught followers that reciting the nembutsu was a path to the Pure Land, which was among the reasons they were exiled from Kyoto. While Honen founded the Jodo sect, it was Shinran's followers who later formed the Jodo Shinshu sect.

Writing commentaries and having a wife and a large family were key factors in the propagation of Shinran's teachings long after he died. The community provides a megaphone effect in helping to spread the message.

During a Q&A period following her lecture, Rev. Nakai suggested ways to open up to the community. Meditation, or mindfulness, is a good gateway into Buddhism, taking advantage of its current popularity.

Offering use of the facilities for forums on homelessness and affordable housing might be another way to promote the temple as a place people can come to and know there are caring people there.

Word Search

D H A N A M A T S U R I G
 K M H D F N Z D J H M M A
 W B D O L F A H I S X A M
 A Q D T U F G V A M K T N
 N O U P M D E G R H A X Z
 J N B M B A I C D I X I Q
 F D O O I J N A W G N O H
 A O C D N F N H U A K L O
 Y K N D I A B E T S U I N
 S U T R A G H K I H T L P
 G S A K Y A M U N I K U A
 E A M U Y X P L N J I L B
 W N C U H S N I H S J K L

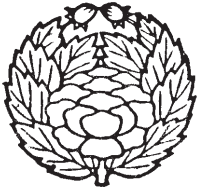
Find the listed words in the diagram, running in any direction: forward, backward, up, down and diagonally.

HANAMATSURI	OBON
BUDDHA	NAMU
SAKYAMUNI	AMIDA
NIRVANA	BUTSU
HIGASHI	JODO
HONGWANJI	SHINSHU
HONPA	DANA
LUMBINI	BETSUIN
ONDOKUSAN	SUTRA

SHOTSUKI OBSERVANCE FOR APRIL

Our monthly shōtsuki service in remembrance of temple family members who passed away in the month of April of a previous year will be held this month on **Sunday, April 21**.

Kanjiro Akizuki	Kikue Kaneshiro	Kihei Moriguchi	Katsuyo Oda	Ushi Shimabukuro	Umeno Tanijo
Shimoe Grace Fujii	Wallace M. Kawachi	Chieko Moriguchi	Tsutomu Ogata	Takashi Shimada	George M. Tokunaga
Shizu Fujimoto	Makoto Kaya	Takino Motoyama	Yuku Ohara	Miyoko O. Shinkawa	Edward M. Tokunaga
Haru Fujiwara	George Makoto Kaya	Clarence T. Motoyama	Isamu Okazaki	Shigeru Shirabe	Dorothy F. Torikawa
Henry K. Fukunaga	Kenneth K. Kihara	Henry Kichio Mukai	George M. Omura	Miyoko Shiramizu	Robert K. Toyama
Kingo Gushikuma	Jean Misao Kobata	Ginichi Murakami	Larry Seiki Oshiro	James Seiki Shiroma	Haruko Tsuda
Harriet Y. Gushikuma	Uto Koja	Joseph I. Muratsuchi	Rodney Yuji Oshiro	Richard Osamu Sorida	Matsue Tsuji
Chotaro Hane	Herbert S. Kondo	Toyoko Murotake	Takashi Otsuka	Laura Sugai	Richard M. Tsukiyama
Suna M. Harada	Masaru Kudo	Mutsu Nakagawa	Ruth Ayako Pacheco	Yutaka Sumida	Koichi Uesato
Yoshiko Harauchi	Harry M. Kumamoto	Myles M. Nakatsu	Alice Sueko Ramos	Lorraine T. Sumiye	Tome Ujimori
Shizuko Hayase	Heoji Kumashiro	Mitsue Nakayama	Kiyoto Saiki	Francis Torao Suzuki	Jean Shizuko Uyema
Yoshimi Hayashi	Takeo Kunimoto	Shizuko Nakayama	Tane Sakamoto	Marian Taguma	Yukiye Uyeno
Takeo Higa	Taki Kurisaki	Violet Y. Nakayama	Shinzo Sakamoto	Alice Kikue Taira	Mitsuyo Watanabe
Chougo Higuchi	Kimino Matsuda	Helen H. Narimasu	Kumeyo Sakamoto	Kitsu Takagi	Toshiharu Yamada
Takao Imayoshi	Yasu Matsuda	Patsy H. Nikaido	Matsuhei Saruwatari	James N. Takayama	Mitsue Yamamoto
Harue Iwaki	Edwin S. Matsuoka	Juka Nishimura	Keith Mitsugi Sato	Hisayo Takenaka	Thomas M. Yamamoto
Tadao Iwasaki	Classie A. McForland	Mume Nishimura	Chieko Sekiya	Tatsue Takeshita	Shizuko Yamamura
Ralph K. Kaizuka	Harue Miike	Shizue Nishioka	Take Serikawa	Takeshi Tanaka	Tamayo K. Yoshimoto
Dennis K. Kanemori	Misue Miyamoto			Shigeru Tanaka	Henry Toshio Yoshino



HIGASHI HONGWANJI MISSION OF HAWAII
1685 ALANEO STREET
HONOLULU, HAWAII 96817

ADDRESS SERVICE REQUESTED

NON-PROFIT ORG.
U.S. POSTAGE
PAID
Honolulu, HI
Permit No. 693

In this issue of WA...

- **Buddha Day 2019** p. 1
- **花祭り** p. 2
- **News on the Betsuin Wireless** p. 3
- **Welcome Rev. Steve Toyoshima** p. 3
- **New Betsuin officers elected** p. 3
- **April movie: *The Departure (2017)*** p. 3
- **2019 Joint Gathering recap** p. 4
- **Word search** p. 4
- **April shōtsuki service** p. 4
- **Acknowledgments** p. 5
- **Temple activities calendar** p. 6

TEMPLE ACTIVITIES CALENDAR

APRIL

4/1	Mon	10 am	Meditation Sutra class
4/7	Sun	10 am	HBC Buddha Day service Honpa Hongwanji Mission of Hawaii 1727 Pali Hwy, Honolulu (no service at Betsuin)
4/8	Mon	12 pm	99 Lunch Bunch chat session Moanalua 99 Food Court
4/9	Tue	3 pm	Ukulele class/band practice
4/11	Thu	7 pm	The Larger Sutra study class led by Rinban Kawawata in English
4/14	Sun	10 am	Hanamatsuri service
4/14	Sun	12 pm	Basic Buddhism discussion in Japanese 仏教入門 (お話と座談会)
4/15	Mon	10 am	Meditation Sutra class
4/16	Tue	3 pm	O-kō: Dharma discussion at Betsuin
4/18	Thu	7 pm	Tea Time Fukuhara Conference Room
4/21	Sun	10 am	Shōtsuki memorial service Sunday school
4/21	Sun	12 pm	Betsuin board meeting
4/21	Sun	12 pm	Art of Paper Folding - Otani Center
4/23	Tue	3 pm	Ukulele class/band practice
4/23	Tue	6:30 pm	Movie night: <i>The Departure (2017)</i>
4/28	Sun	10 am	Shinran Shōnin memorial service & Sunday service/Sunday school

MAY

5/1	Wed	6 pm	Bon dance practice - Otani Center
5/5	Sun	10 am	Shōtsuki memorial service
5/5	Sun	12 pm	Basic Buddhism discussion in Japanese
5/6	Mon	10 am	Meditation Sutra class
5/8	Wed	6 pm	Bon dance practice - Otani Center
5/9	Thu	7 pm	The Larger Sutra study class led by Rinban Kawawata in English
5/12	Sun	10 am	Mother's Day family service
5/13	Mon	12 pm	99 Lunch Bunch chat session
5/14	Tue	3 pm	Ukulele class/band practice
5/15	Wed	6 pm	Bon dance practice - Otani Center
5/16	Thu	7 pm	Tea Time Fukuhara Conference Room
5/19	Sun	10 am	Shinran Shonin's birthday service
5/19	Sun	12 pm	Betsuin board meeting
5/19	Sun	12 pm	Art of Paper Folding - Otani Center
5/21	Tue	3 pm	O-kō: Dharma discussion at Kaneohe
5/22	Wed	6 pm	Bon dance practice - Otani Center
5/26	Sun	10 am	All Wars Memorial service
5/27	Mon	10 am	Meditation Sutra class
5/28	Tue	10 am	Shinran Shōnin memorial service
5/28	Tue	3 pm	Ukulele class/band practice
5/28	Tue	6:30 pm	Movie night: <i>There Was a Father (1942)</i> 父ありき (出演者: 笠智衆)

Everyone is welcome to join the morning chanting held at 7 am daily (except on Sundays & the 28th day of the month) in the Betsuin main hall.